

SOKKIA

MADE TO FIT YOUR WORLD.

Field Supplies Catalog



SOKKIA

Carrying Cases	25
Levels	
Abney	18
Hand	17
Planimeters	16
Plumb Bobs	26
Prisms, Prism Poles, Accessories	
Accessories	9
Bipods and Tripods	9
Data Collector Brackets	9
Prisms	5-6
Prism Poles	8,10
Specialty Prisms	7
<hr/>	
Reflective Targets	4
Rods	
Digital	13
Nedo Fiberglass	12
Specialty	14
SK Rod Replacement Pole Sections	15
Specialty Poles	
GPS	11
Range	11
Robotics	11
Stereoscopes	24
Tripods and Accessories	
Tripods	19-20
Tribrachs and Adapters	22-23
Tripod Parts	21-22

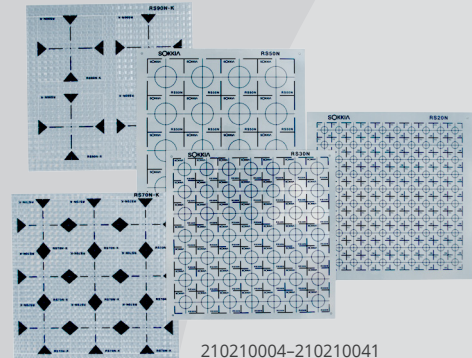


Reflective Targets

Reflective Sheet Targets

RS**T 0.3 mm thin, self-adhesive sheets that adhere to almost any surface. RS**N includes normal (0.5 mm) reticle lines.

210210004	RS00 Target 230 x 230 mm (1 each) (SO)
210210005	RS05T Targets 5 x 5 mm (400 each) (SO)
210210006	RS10N Targets 10 x 10 mm (400 each)
210210009	RS10T Targets 10 x 10 mm (400 each)
210210010	RS15N Targets 15 x 15 mm (196 each) (SO)
210210013	RS15T Targets 15 x 15 mm (196 each) (SO)
210210018-SURSK	RS20N Reflective Sheet Target 20 x 20 mm (0.79 x 0.79 in.) (100/Sheet)
210210019	RS20T Targets 20 x 20 mm (100 each) (SO)
210210026	RS30N Targets 30 x 30 mm (49 each)
210210029	RS30T Targets 30 x 30 mm (49 each) (SO)
210210035-SURSK	RS50N Reflective Sheet Targets 50 x 50 mm (1.96 x 1.96 in.) (16/sheet)
210210037-SURSK	RS70N Reflective Sheet Targets 70 x 70 mm (2.75 x 2.75 in.) (9/sheet)
210210040	RS90N-K Targets 90 x 90 mm (4 each) (SO)
210210041-SURSK	RS90N Reflective Sheet Targets 90 x 90 mm (3.54 x 3.54 in.) (4/sheet)

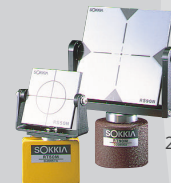


210210004-210210041

Reflective Sheet Targets

Easy-to-use reflective targets supplied on adhesive-backed sheets; can be directly affixed to measuring points. For alternative needs, rotary targets and a 2-point target are also available.

210210046	RT50M Magnetic Target
634412	RT90M Rotary Target (SO)
210210045	RT50G10 Rotary Target (SO)
210210002	RC50 Reflective Target 73 x 73 mm (SO)



210210046

634412

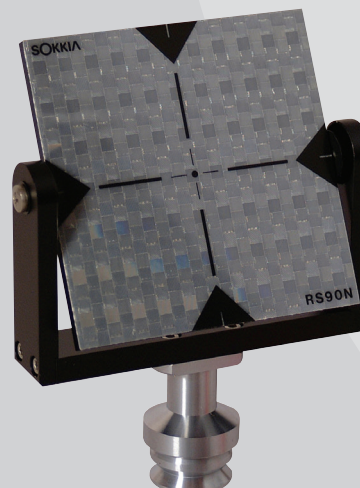


210210045

Detachable Rotary Targets

The RT90C can be mounted on a tribrach with the AP41 adapter or mounted directly to prism pole.

210160170	RT90C 360° Rotating Sheet Target
-----------	----------------------------------



Robotic Prisms

These robotic prisms are built to an offset of 87mm and prism constant of -7mm. Threading is 5/8x11 and can be used with Sokkia or Topcon robotic poles. The prism can also be used with Sokkia SB179 quick release adapter system.

210150005-SURSK	ATP1
1004684-01-SURSK	Builder Series 360° Prism



Single Prisms

These prisms are compatible with the Builder Series Standard Prism Systems. 62 mm Prism Plastic Canisters are available in two styles and colors:

724801	Prism 62 mm Silver Coated Water Sealed
724802	Economy Prism 62 mm Silver Coated
724813	Economy Prism 62 mm Copper Coated



Rear Locking Builder Series 6 x 9

This prism assembly allows the user to quickly adjust the tilting target from behind the prism as it is pointing at the instrument to allow accurate sighting. The targets are 6 x 9 in. and available in either florescent orange or yellow. The prism can be either mounted in a 0 or -30 mm offset position. All come with a protective carry case for the target or complete system.

724809	Tilting Prism Mount with 6 x 9 in. Target Florescent Orange
724810	Tilting Prism Mount with 6 x 9 in. Target Florescent Yellow
<i>These complete prism systems come with a 62 mm copper-coated prism in a sealed canister.</i>	
724811	Tilting Prism Assembly with 6 x 9 in. Target, Florescent Orange (Copper Coated Prism)
724812	Tilting Prism Assembly with 6 x 9 in. Target, Florescent Yellow (Copper Coated Prism)



Prisms

Rear Locking Builder Series – 5½ x 7

This prism assembly allows the user to quickly adjust the tilting target from behind the prism as it is pointing to the instrument to allow accurate sighting. The targets are 5½ x 7 in. and are available in either florescent orange or yellow. The prism can be either mounted in a 0 or -30 mm offset position. All come with a protective carry case for the target or complete system.

724804	Economy Single Tilting Prism Mount with 5½ x 7 in. Target Florescent Orange
724805	Economy Single Tilting Prism Mount with 5½ x 7 in. Target Florescent Yellow
<i>The complete prism systems come with a 62 mm silver-coated prism in a sealed canister. Both come in a protective carry case.</i>	
60857-SURSK	Economy Tilting Prism Assembly with 5½ x 7 in. Target, Florescent Orange
724808	Economy Tilting Prism Assembly with 5½ x 7 in. Target, Florescent Yellow



Strobe Prism Assembly

62 mm Strobe Prism Assembly with a 5½ x 7 in. or 6 x 9 in. florescent orange target. The prism can be either mounted in a 0 or -30 mm offset position. It works perfectly in low light conditions and all the electronics are housed in the prism canister. The battery is a Sanyo CR-1/3N; good for over 20 hours of use. Comes with a protective carry case for the target or complete system.

724100	Strobe Prism Assembly with 5½ x 7 in. Target
724101	Strobe Prism Assembly with 6 x 9 in. Target



Builder Series Mini Prisms

These robotic prisms are built to a prism constant of -7mm. Threading is 5/8x11 and can be used with Sokkia or Topcon robotic poles. The prism can also be used seamlessly with Sokkia SB179A quick release adapter system. Which comes standard with RC-PR5A kits.

724861	Mini Prism System with Non-Adjustable Center Vial
724862	Mini Prism System with Non-Adjustable Side Vial



Specialty Prisms

Pin Pole with Sliding 25 mm Prism System

System includes a 25 mm silver coated prism, three 60 cm length pole sections – in red and white 10 cm stripes (total length is 1.8 m/5.9 ft.). The prism can be mounted in a 0 mm offset position. The kit also comes with a padded carrying case and a plumb bob hook, and cap for prism to use as an offset prism by itself.

724870	Mini Prism System Kit with Pin Pole
--------	-------------------------------------



GT/IX Traverse Kit

Complete heavy duty traverse kit for use with GT or IX robotic total stations.

644731012	GT/IX Traverse Tilting 1P Setup with Plug4
-----------	--

Kit includes TR-101 Tribrach, S2 Adapter, Prism2 with Holder and Target, Plug 4, Carrying case. This is for 'leap frog' traverse method in which tribrachs may be left in place.

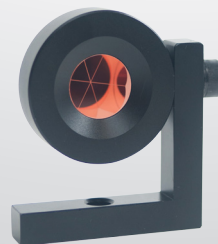
Configured for Sokkia iX robotic instrument. May be used with other instruments, but please check for proper height measurement.



Monitoring Prism

25 mm specialty prism that can be mounted to a range of different surfaces and used in many different environments.

724814	90° L-Bar Monitoring Prism
--------	----------------------------



Builder Series Prism Poles

Compression/Collet Lock Prism Poles

The Sokkia compression lock prism pole offers a secure locking system with a polished aluminum pole with a brass lock. The pole is red and white offered in three sizes with an adjustable tip and dual graduations. Also included with each pole is a carrying case.

51780-SURSK	8.5 ft. Compression Lock Prism Pole – Adjustable Tip (Dual Graduations)
724207	12 ft. Compression Lock Prism Pole – Adjustable Tip (Dual Graduations)
724208	15 ft. Compression Lock Prism Pole – Adjustable Tip (Dual Graduations)



Sokkia Knob-Lock Prism Poles

The Sokkia knob-lock prism pole is easy to tighten and release with its large adjustable knob. The pole is red and white offered in three sizes with an adjustable tip and dual graduations. Also included with each pole is a carrying case.

724200	8.5 ft. Knob Lock Prism Pole – Comes with holes for locking your height setting and Adjustable Tip (Dual Graduations)
724201	12 ft. Knob Lock Prism Pole – Adjustable Tip (Dual Graduations)
724202	15 ft. Knob Lock Prism Pole – Adjustable Tip (Dual Graduations)



Sokkia Quick-Release Prism Poles

The Sokkia quick-release handle lock prism pole allows for quick adjustments to prism heights. The pole is red and white offered in three sizes with an adjustable tip and dual graduations. Also included with each pole is a carrying case.

51773-SURSK	8.5 ft. Quick Release Lever Lock Prism Pole – Adjustable Tip (Dual Graduations)
724204	12 ft. Quick Release Lever Lock Prism Pole – Adjustable Tip (Dual Graduations)
724205	15 ft. Quick Release Lever Lock Prism Pole – Adjustable Tip (Dual Graduations)



Prism Pole Bipods and Tripods

Builder Series Bipod

Builder series bipod assembly is designed for quick setup and field durability. These models are come with a carrying case to protect them. The bipods also have a bipod leg clip included as well.

724897	Economy Prism Pole Bipod Red
724898	Economy Mini Prism Pole Bipod Red
1009273-01	Carbon Fiber Prism Pole Bipod (Sokkia)



Prism Pole Accessories

808850	Universal Replacement Point (Prism Pole, Bipod and Range Pole)
808851	Topographic Shoe Regular
808852	Topographic Shoe Wide Base
808853	5/8 x 11 Adjustable Precise Tip - Fine (Compatible with Pro Series and Robotic Poles)



808850



808851



808852



808853

Mini Stake-Out Poles

Available in Economy or Pro-Series. Measures 15 in. (1.29 ft.) with point (1 ft. rod section).

724242	Economy Mini Stake-Out Pole Red with Carrying Bag
808043	5.1 ft. / 2.7 m Pro Series Aluminum Knob Lock Mini Pole



724242



808043

Data Collector Brackets

Pro Series Crush Proof 1.25 in. Pole Claw Clamp with Pro Series Cradle

- Crush proof style pole clamp and cradle with a push button quick release
- 1.25 in. pole clamp capacity
- 20 different angles snap-in adjustment with 2 hardened stainless steel lock pins
- Anti-slip diamond knurled lock knobs
- Constructed of aircraft grade 6061-T6 billet aluminum
- Black anodize finish with high tech laser engraving
- Made in the USA

808152	Claw Clamp and Cradle for Allegro/Explorer
808153	Claw Clamp and Cradle for Archer/MINI
808155	Claw Clamp and Cradle for SHC2500
808156	Claw Clamp and Cradle for SHC250
808160	Pole Clamp, Quick Release with Vial and Compass
808161	Pole Clamp, Quick Release Plain
1000183-01-SURSK	4 Screw Pole Mount Bracket for Mesa
1015317-01-SURSK	FC/SHC5000 RAM CLIP mount Kit
1029734-01-SURSK	Landscape Keyboard



1015317-01-SURSK

PRO Series Prism Poles

Pro Series Knob Lock Prism Poles Data Collector Brackets

- One hand operation
- Slip resistant molded rubber knob
- Precision CNC marked graduations won't fade or rub off
- Heavy duty aluminum construction with electrostatic epoxy powder coat finish
- 40 minute top-adjust vial bubble level Fine threaded precise tip allows for precision height adjustment
- Stainless steel tip points, ultra light weight corrosion resistant hybrid design
- Available in red/white bands
- Lightweight

808200	8.5 ft. Pro Series Aluminum Knob Lock Prism Pole, Dual Graduations
808201	12 ft. Pro Series Aluminum Knob Lock Prism Pole, Dual Graduations
808202	15 ft. Pro Series Aluminum Knob Lock Prism Pole, Dual Graduations
808204	3.6 m Pro Series Aluminum Knob Lock Prism Pole, Metric



Pro Series Bipods

- Original quick snap bipod assembly with dual push button thumb release or rapid level adjustment
- Quick Closure Pole Lock Mechanism allows fast attachments
- Accepts pole diameters of 0.75 to 1.5 in. [19 - 38 mm]
- Quickly and effortlessly convert to a tripod by adding an optional third leg
- Simple few additional twist of lock knob to secure pole to bipod
- Wide stance pivot tang to improve stability by distributing center of mass
- All metal CNC construction
- Stainless steel lightweight points included
- Manufactured from aircraft grade 6061-T6 billet anodized aluminum, stainless steel and brass

808896	Pro Series Prism Pole Tripod
808897	Pro Series Prism Pole Thumb Release Bipod – Red



Specialty Poles

Robotic Pole

The Sokkia robotic pole features all of the benefits of the “Pro Series” line of product. The inner pole is aluminum while the outer pole is carbon fiber. The pole has external graduations for quick grading. 727071 is the standard Robotic Prism Pole sold with the SX and IX systems. The pole has a knob lock mechanism and locking pin holes every .5 feet.

727071	Sokkia robotic carbon/aluminum 8ft RCPR5
--------	--



GPS Poles

The Sokkia GPS pole lineup features a wide variety of styles. Choose from adjustable height to 2 m fixed height. Also available is a pole with anti-crush feature, so your data collector clamp will not compromise the pole. The 808016 is the pole that comes with GRX3 and GCX3 systems standard.

808015	2.5m GPS Carbon Fiber Pole, Dual Grads
808016	POLE, CARBON, FIXED 2M, 2 SECT, SOKKIA
808017	Sokkia Snap-Lock GPS Carb Fbr Rover Rod
724290	2 m Economy GPS Aluminum Rover Rod, 2 Section – Sokkia Green with carrying case
724291	2 m Economy GPS Carbon Fiber Rover Rod, 2 Section with carrying case

724290



808015



808016



Heavy-Duty Range Poles

Alternating 12 in. color sections orange and white.

808849	4 ft. Range Pole Section
808848	8 ft. Range Pole 2 Sections with Point
808847	12 ft. Range Pole 3 Sections with Point

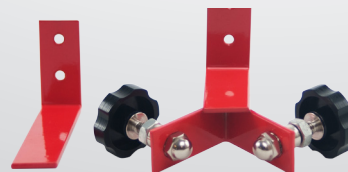
808848



Pole Peg Adjusting Jig

This simple bracket allows you to adjust and calibrate pole vials in your office. The adjusting jig features a simple L-bracket to set the pole point into and a knob adjusting top to center the pole vial prior to adjusting the bubble.

724301	Pole Peg Adjusting Jig
--------	------------------------



Fiberglass Rods

Sokkia SK Level Rod

- Unique patented oval shape permits equal size graduations full-length, prevents rod from rolling and is easier to hold
- Numerals and graduations are epoxy-protected for maximum wear-resistance and sized for maximum readability
- Sections cushioned with glides to prevent wear
- Linear accuracy exceeds 1 in 4,000
- Made from strong, corrosion-proof fiberglass that is lightweight and won't warp or swell
- Rods have height measuring gauge on back side except for 807368 or 807349
- Female threaded hole ($\frac{5}{8}$ x 11 in.) on top for mini-prism
- Made from non-conductive materials

807344	18 ft. SK Rod, 5 sections, ft./10ths
807338	25 ft. SK Rod, 7 sections, ft./in.
807348-SURSK	25 ft. SK Rod, 7 sections, ft./10ths
807368	25 ft. / 7 m in length, 7 sections, meters/decimeters / $\frac{1}{2}$ centimeters and ft./10ths/100ths
807349	32 ft. in length, 9 sections, ft./10ths/100ths with attached footplate



807349



807338

Nedo® Fiberglass Levelling Rods

- Extremely robust design with Anti-Jam® buttons made of brass ensure a long life
- High precision scale on front and back
- Scale on back allowing for overall height readings
- Ergonomically designed shape for a better grip
- Non-conductive under dry conditions
- Laser receiver brackets are easily attached
- Free carrying bag and snap-on rod level included
- Made in Germany

809109	3 m Fiberglass Leveling Rod, 3 sections, m/cm/5 mm
809102	13 ft. Fiberglass Leveling Rod, 3 sections, ft./10ths/100ths
809106	13 ft. Fiberglass Leveling Rod, 3 sections, ft./in./8th
809110	4 m Fiberglass Leveling Rod, 3 sections, m/cm/5 mm
809103	16 ft. Fiberglass Leveling Rod, 3 sections, ft./10ths/100ths
809107	16 ft. Fiberglass Leveling Rod, 3 sections, ft./in./8th
809111	5 m Fiberglass Leveling Rod, 3 sections, m/cm/5 mm
809104	25 ft. Fiberglass Leveling Rod, 3 sections, ft./10ths/100ths
809112	7.6 m Fiberglass Leveling Rod, 3 sections, m/cm/5 mm



809103



809104

Fiberglass Rods

SDL Digital Level Rods

Sokkia's RAB-Code (RANdom BiDirectional Code) staffs are designed exclusively for use with Sokkia Digital Levels. Staffs are available in Invar, fiberglass and aluminum in various lengths.

738037	BIS30A New Super Invar RAB-code Staff (SO)
210154100	BIS20 2 m Invar Staff Set for SDL30 (Two Rods with Case) (SO)
210154200	BIS20 3 m Invar Staff Set for SDL30 (Two Rods with Case) (SO)
210154300	BGS30 4 m Barcode Staff with Case (metric grads on back)
210154400	BGS40 4 m Barcode Staff with Case (metric grads on back)
210154500	BGS50 5 m Barcode Staff with Case (metric grads on back)
210154510	BGS50G3 16 ft. Barcode Staff with Case (ft./10th on back)
210164300	BAS55 Aluminum Barcode Staff 5 m with Case
210150031	GS20L Circular Level for BGS Rod, 20 in.
210150032	GS60L Circular Level for BGS Rod, 60 in./2 m with Case
809601	Base Plate (Turtle)



Specialty Rods

Builder Series Level Rods

Fiberglass Rods

1005149-01	13 ft. Builder Fiberglass Rod, inches
1005150-01	13 ft. Builder Fiberglass Rod, tenths
1005151-01	16 ft. Builder Fiberglass Rod, inches
1005152-01	16 ft. Builder Fiberglass Rod, tenths
1005153-01	20 ft. Builder Fiberglass Rod, inches
1005154-01	20 ft. Builder Fiberglass Rod, tenths
1005155-01	25 ft. Builder Fiberglass Rod, inches
1005156-01	25 ft. Builder Fiberglass Rod, tenths

Aluminum Rods

1005157-01	13 ft. Builder Aluminum Rod, inches
1005158-01	13 ft. Builder Aluminum Rod, tenths
1005159-01	16 ft. Builder Aluminum Rod, inches
1005160-01	16 ft. Builder Aluminum Rod, tenths
1027377-01	ROD, 5M BUILDER ALUMINUM E, MM
1027378-01	ROD, 5M BUILDER ALUMINUM E. INCHES
1024016-01	Button Kit R7-1701

Direct Elevation Rods

- Made of high strength clear anodized aluminum for lightweight, rugged, dependable operation
- They will not rust, split, splinter, swell or warp in any environment
- Heavy duty, High Visibility tape
- Solid tape lock with internal brake slide

807650	GR10T Direct Elevation Rod, ft./10ths, 10ft
807651	GR10I Direct Elevation Rod, ft/in (SO)
807652	GR10M Direct Elevation Rod 3m (SO)
807653	Replacement Tape 10 ft., 10ths (SO)
1001605-01	GR1000, Rod, 10ft Laser Rod 10ths plus cut/fill
1001607-01	GR1450T, Rod 15ft Laser Rod 10ths
1001991-01	GR1000T, Direct Reading Rod 10ft 10ths with receiver guide
1030678-01	BKT, LS-80L, Laserline B1-LS70-80
1030679-01	BKT, LS-100D, Laserline B1-LA

Sokkia/SK Measuring Poles

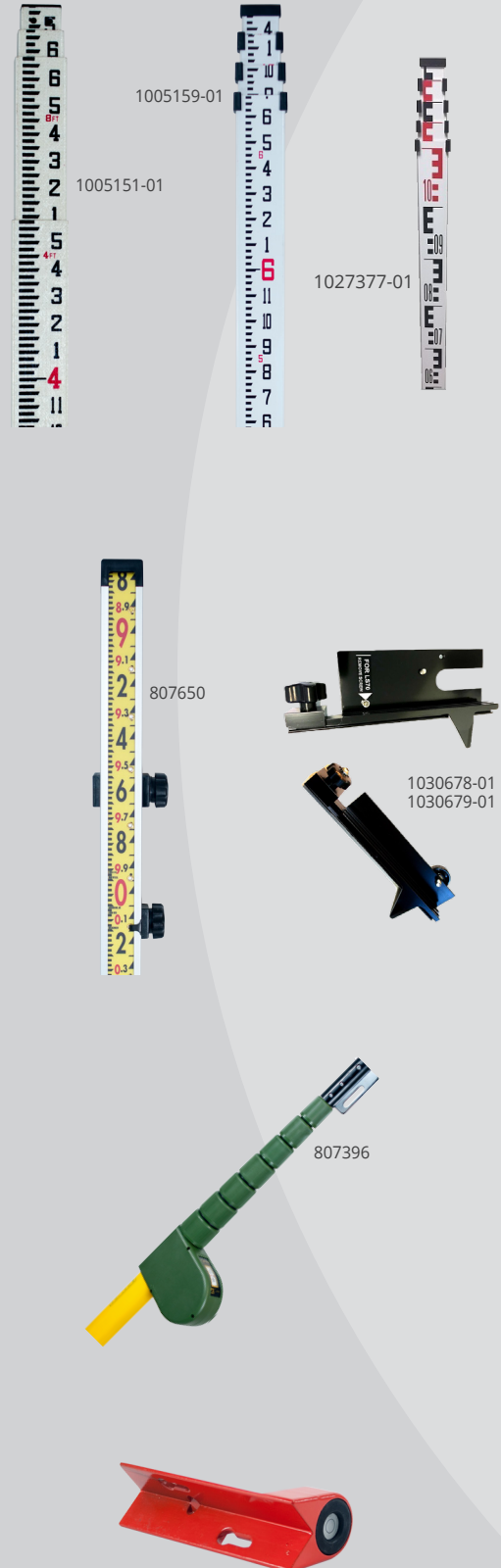
- Exact measurements of up to 26 ft. or 8 m can be read on the enclosed, sealed digital readout
- Rugged fiberglass construction with excellent tensile strength
- Smooth telescoping movement with friction clamps
- Only 4 ft. 8 in. closed and less than 5 lbs.
- Linear accuracy exceeds 1 in 2,000

807376	Graduated in ft./in./8ths
807386	Graduated in ft./10ths/100ths
807396	Graduated in m/dm/cm/mm

Rod Level

Determines if the level rod is perpendicular. Head is adjustable so that a true level can be maintained.

724190	Rod Level
--------	-----------



SK Rod Replacement Pole Sections

18 FT. SK Level Rod ft./Inch with Case

807334	18 ft. SK SK Level Rod Sections
8073-341	SK205, 18 ft., inches, bottom 0-4
8073-342	SK205, 18 ft., inches, second 4.7.5
8073-343	SK205, 18 ft., inches, third 7.5-11
8073-344	SK205, 18 ft., inches, fourth 11.14.5
8073-345	SK205, 18 ft., inches, fifth 14.5-18

18 FT. SK Level Rod ft./Inch with Case

807344	18 ft. SK Level Rod ft./10ths with Case
8073-441	SK205, 18 ft., tenths, bottom 0-4
8073-442	SK205, 18 ft., tenths, second 4-7.5
8073-443	SK205, 18 ft., tenths, third 7.5-11
8073-444	SK205, 18 ft., tenths, fourth 11-14.5
8073-445	SK205, 18 ft., tenths, fifth 14.5-18

25 FT. SK Level Rod ft./Inch with Case

807338	25 ft. SK Rod, ft./inch with Case
8073-381	SK205, 25 ft., inches, bottom 0-4
8073-382	SK205, 25 ft., inches, second 4-7.5
8073-383	SK205, 25 ft., inches, third 7.5-11
8073-384	SK205, 25 ft., inches, fourth 11-14.5
8073-385	SK205, 25 ft., inches, fifth 14.5-18
8073-387	SK205, 25 ft., inches, sixth 18-21.5

25 FT. SK Level Rod ft./10ths with Case

807348	25 ft. SK Rod, ft./10ths with Case
8073-481	SK205, 25 ft., tenths, bottom 0-4
8073-482	SK205, 25 ft., tenths, second 4-7.5
8073-483	SK205, 25 ft., tenths, third 7.5-11
8073-484	SK205, 25 ft., tenths, fourth 11-14.5
8073-485	SK205, 25 ft., tenths, fifth 14.5-18
8073-487	SK205, 25 ft., tenths, sixth 18-21.5

25 FT. SK Level Rod ft./10ths with Case

807368	25 ft. SK Rod, 10ths/metric with Case
8073-681	SK205, 25 ft., tenths/metric, bottom 0-4
8073-682	SK205, 25 ft., tenths/metric, second 4-7.5
8073-683	SK205, 25 ft., tenths/metric, third 7.5-11
8073-684	SK205, 25 ft., tenths/metric, fourth 11-14.5
8073-685	SK205, 25 ft., tenths/metric, fifth 14.5-18
8073-686	SK205, 25 ft., tenths/metric, sixth 18-21.5
8073-687	SK205, 25 ft., tenths/metric, seventh 21.5-25

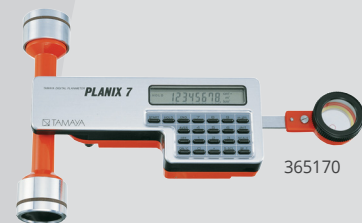
Planimeters

32 FT. SK Level Rod ft./10ths with Case

807349	32 ft. SK Level Rod ft./10ths with Case
8073-491	SK205, 32 ft., tenths, bottom 0-4
8073-492	SK205, 32 ft., tenths, second 4-7.5
8073-493	SK205, 32 ft., tenths, third 7.5-11
8073-494	SK205, 32 ft., tenths, fourth 11-14.5
8073-495	SK205, 32 ft., tenths, fifth 14.5-18
8073-496	SK205, 32 ft., tenths, sixth 18-21.5
8073-497	SK205, 32 ft., tenths, seventh 21.5-25
8073-498	SK205, 32 ft., tenths, eighth 25-28.5
8073-499	SK205, 32 ft., tenths, ninth 28.5-32

Planimeters

365151	Planix 5 Electronic Polar Compensator Planimeter
365170	Planix 7 Electronic Compensator Roller Planimeter
365110	Planix 10S Marble Digitizing Area Line Meter



Hand Levels

Hand Level – 1x

Fixed eyepiece; internally mounted bubble assembly and adjustable reflector. Six inches in length with durable finish.

804350	1x Hand Level with Bubble Inside
804908	Replacement Case



804350

Square-Type Hand Level – 1x

Fixed eyepiece; internally mounted bubble assembly and adjustable reflector. 6 inches in length with durable finish.

804520	Square-Type Hand Level
804912	Replacement Case



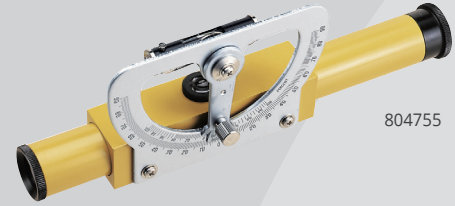
804520

Abney Levels

Magnifying Abney Level with Stadia – 5x

Percent scale in both directions easy-slide focusing motions for objective and eyepiece. 1:100 stadia. Enamel finished $7\frac{3}{4}$ in. barrel extends to $8\frac{5}{8}$ in. Measure existing grades with the $1 \times 3\frac{3}{4}$ in. flat base. Padded belt-loopcase included.

804755	Magnifying Abney Level with Stadia
804911	Replacement Case



804755

Abney Level with Clinometer

Tube is $5\frac{1}{8}$ in. long. Radius arc of $1\frac{1}{8}$ in. graduated in degrees (0-90°) in both directions; vernier reading of 10 minutes. Slope scale 1:1 and 1:10. Padded belt-loop case included.

804710	5" Arc, Degree and Slope Abney Level
804715	5" Arc, Percent and Degree Abney Level
804905	Replacement Case



804710

Topographic Abney Level

Two interchangeable arcs offer chainage correction, degrees (0-60°) in both directions and percent of grade. Index has friction movement for fine adjustment. Non-glare $6\frac{3}{8}$ in. aluminum level tube extends to $7\frac{3}{8}$ in. Padded belt-loop case included.

804745	$6\frac{3}{8}$ in. Top with Two Arcs Abney Level
804907	Replacement Case



804745

Double Right Angle Prism

Two prisms allow for sight to the right and left. Clear optical glass for straight ahead viewing. Metal construction. Includes leather case.

724780	Double Right Angle Prism
--------	--------------------------



Tripods

Professional Tripods

Sokkia professional tripods are produced using birch wood and fiberglass construction. They feature a 5/8"x11 universal screw for instrument mount and either a quick clamp (QC) or twist locking mechanism to lock the legs. They feature hardened steel points, and also include a heavy duty carrying strap.

724645	Aluminum Tripod Medium Weight Quick Clamp Height: 38" min / 63" max / 42" closed	5/8 x 11 Head
724251	Fiberglass Tripod with Dual Clamp Height: 42" min / 70" max / 45" closed	5/8 x 11 Head
724252	Wood Tripod Dual Clamp with Tool Kit Height: 42" min / 70" max / 45" closed	5/8 x 11 Head



724645



724251

Heavy Duty aluminum tripod

The Sokkia Heavy Duty Aluminum tripod features high grade aluminum construction with a square leg design. Weight is only 10lbs, which makes it perfect for using with rotating lasers or theodolites. The tripod features a quick clamp (QC) leg locking mechanism. Also includes a heavy duty carrying strap.

1030651-01	Tripod, Square Leg Aluminum QC, SOKKIA Height: 36" min / 60" max / 41" closed	Standard Head
------------	--	---------------



Tripods

Professional Robotic Tripod

- Round, oversized tripod head
- Quick clamp for easy adjustments
- Heavy duty strap
- Inner locking strap for tripod stabilization
- Wood, fiberglass construction

1030560-01	Tripods, SK-15 Wood Fiberglass QC Height: 38" min / 63" max / 42" closed	Weight: 18.5 lbs.
------------	---	-------------------



Sokkia Wide-Frame Aluminum Tripod

Anodized finish in high-visibility International orange and silver with sling strap for easy hand or shoulder carrying. Extra-long shoes with large spurs for greater anchoring power. Hardened steel with a screw-clamp leg assembly.

1005306-01	PFA2 Aluminum Tripod, Flat Height: 67" max / 41" closed	Weight: 8.6 lbs.	$\frac{5}{8}$ x 11 Flat Head
------------	--	------------------	------------------------------



Elevating Tripod

- Robust aluminum top plate with $\frac{5}{8}$ x 11
- Double telescope for a large working range
- Anodized scale
- Robust crank mechanism for easy handling
- Built-in bubble for easy setup
- Slip-Guard to prevent the legs from spreading unintentionally
- Break-proof aluminum quick release levers

809550	Medium Duty Elevating Tripod Height: 44" min / 93" max / 48" closed	Weight: 12 lbs.
809551	Heavy Duty Elevating Tripod Height: 34" min / 112" max / 44" closed	Weight: 15 lbs.
60810-SURSK	Extra Heavy Duty Elevating Tripod Height: 33" min / 119" max / 52" closed	Weight: 19 lbs.
60811-SURSK	Extra Heavy Duty GIANT Elevating Tripod Height: 70" min / 157" max / 77" closed	Weight: 25lbs



Tripod Stabilizer

Designed to provide stability when working indoors on concrete and other hard surfaces. Made of heavy-duty aluminum and collapses for compact storage. Comes with rubber O-rings that fit over the feet of the tripod for extra security.

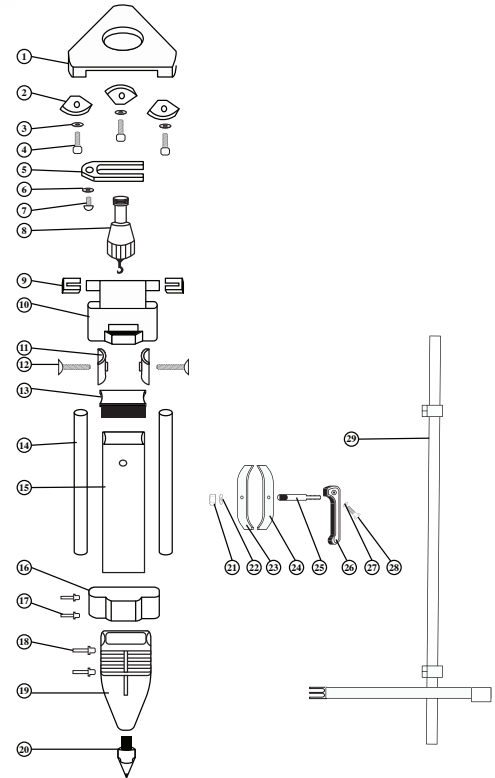
808903	Tripod Stabilizer
--------	-------------------



Builder Series Tripod Parts

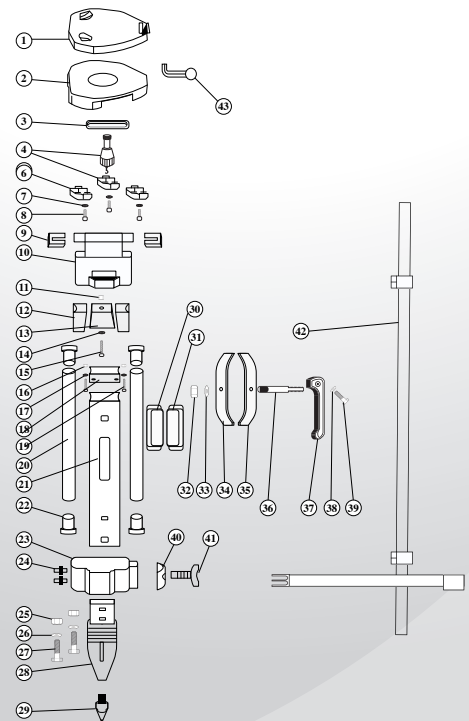
Tripod Parts - Aluminum Builder Series (724445, 724445)

724445-29	724445 Strap assembly (Illustration 29)
724445-30	724445-30 724445 Quick release assembly (Illustration 21-28)
724445-31	724445 Leg assembly (Illustration 9-15)
724445-32	724445 Tripod head assembly (Illustration 1-8)
724445-33	724445 Tripod foot assembly (Illustration 16-20)
724645-2	Tripod head
724645-22	Tripod shoe #22
724645-23	Tripod shoe nail
724645-29	Clamp lever rf 724645-45 assembly
724645-3	Centering guide #3
724645-32	724645 Strap assembly (Illustration 32)
724645-4	Centering bolt #4
724645-45	724645 Quick release assembly (Illustration 24-31)
724645-46	724645 Leg assembly (Illustration 9-18)
724645-48	724645 Tripod head assembly (Illustration 1-8, 33)
724645-50	724645 Tripod foot assembly (Illustration 19-23)
724645-HINGE	Hinge bracket



Tripod Parts – Fiberglass (724251, 724252)

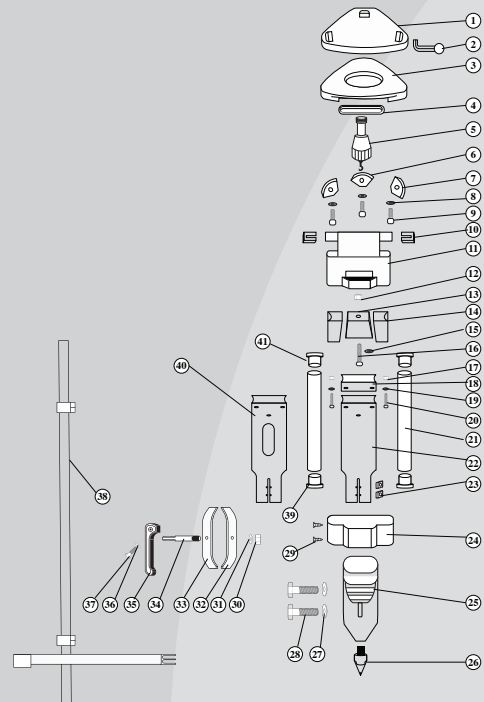
724251-10	Hinge bracket
724251-22	Leg dowel cap
724251-25	Nut
724251-36	Clamp shaft
724251-38	E ring
724251-39	Lever axis
724251-9	Hinge bushing
724252-22	Clamp band
724252-24	Tripod shoe nail
724252-25	Tripod shoe
724252-36	724252 Strap assembly (Illustration 36)
724252-37	724252 Quick release assembly (Illustration 37-1 - 37-8)
724252-46	724252 Leg assembly (Illustration 8-21, 30-32)
724252-48	724252 Tripod head assembly (Illustration 1-7, 33-35)
724252-50	724252 Tripod foot assembly (Illustration 22-29)
724252-8	Hinge bushing
724252-9	Hinge bracket
724252-CLAMP	Complete quick clamp assembly



Builder Series Tripod Parts

Tripod Parts - Wood Fiberglass (724281, 724282)

724282-38	Strap assembly (Illustration 38)
724282-45	Quick release assembly (Illustration 30-37)
724282-46	Leg assembly (Illustration 10-22, 24, 29, 39, 41)
724282-47	Leg assembly with handle (Illustration 10-21, 24, 29, 39, 40, 41)
724282-48	Tripod head assembly (Illustration 1-9)
724282-50	Tripod foot assembly (Illustration 23, 25-28)



Vertical Construction Column Clamp

1003884-01	Column Clamp Mount
1003885-01	1-man Installation Kit for Column Clamp



Tribrachs and Adapters

Precision Tribrachs

Tribrachs accept Sokkia EDM systems, electronic and optical theodolites, as well as equipment and accessories. Base plate has standard $\frac{5}{8}$ x 11 threads and circular level vial with a sensitivity of 10 min./2 mm twist focus knob.

307486007-SURSK	TR-102 For manual TS and GPS
307796006-SURSK	TR-111 For motorized TS with optical plummet
307796007-SURSK	TR-112 For manual TS with optical plummet
307486006-SURSK	TR-101 For motorized TS without optical plummet



307796007-SURSK

Laser Tribrach

Bright focused laser dot provides accurate and quick positioning over a point. Push button on/off switch with standard 8 minute circular vial. Includes standard 3 volt CR2 lithium battery.

724034	Tribrach with Laser Plummet, Black
--------	------------------------------------



724034

Builder Series Tribrachs

22-006008-01-SURSK	Tribrach with Optical Plummet, Black
724036	Tribrach without Plummet, Black



22-006008-01-SURSK

Tribrachs Adapters

Adapter accepts all mount and target assemblies; has 60 second level vial for accurate leveling and centering that's adjustable to match height of optical axis above the tribrach.

Mounting adaptor for GPS, prisms and target systems with most tribrachs - $\frac{5}{8}$ x 11 center stud.

22-006009-01-GPSSK	Tribrach Adapter Fixed
<i>Adapts GPS, prisms and target systems to most tribrachs - has removable center plug with $\frac{5}{8}$ x 11 threads and locking screw. Removable center available as a replacement separately.</i>	

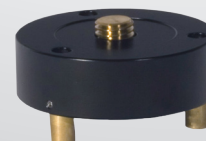
51842-SURSK	Tribrach Adapter with removable center
-------------	--

Includes $\frac{5}{8}$ x 11 male thread for attaching GPS, prisms and target systems. Threaded portion attached to rotating plate for easy aiming. Plate has knurled edge and friction stop.

724042	Tribrach Adapter friction rotatable
210160016-GPSSK	AP41 Optical plummet adapter with vial and adjustable height



210160016-GPSSK



22-006009-01



51842-SURSK



724042

Stereoscopes

MS27

The MS27 offers unmatched precision and ease of use for viewing and interpreting aerial photographs. The distance between the stereo pairs is 27 cm, and the field of view is a generous 18 x 23 cm. TRA2 tracking device (option) allows for accurate stereoscopic observation over entire overlapped portions of photographs. Illumination unit LA3 is provided as an optional accessory.

MS27 Specifications

MAIN UNIT

Distance of optical path	27 cm
Magnification	Swing-in Magnifier: 1.8x BN3 Binocular: 3x, BN8A Binocular: 8x
Field of view of stereoscope	18 x 23 cm
Field of view of binocular	BN3: 70 mm, BN8A: 27 mm
Range of eye-span	55 to 75 mm
Weight	4.0 kg (8.8 lbs.)

PB1 PARALLAX MEASURING BAR

Minimum graduation / estimation	0.05 mm / 0.01 mm
Measurement range	0 to 50 mm
Length / weight	39.5 cm / 0.5 kg (1.1 lbs.)

TRA2 TRACKING DEVICE (optional)*

Size of photographs	Up to 45 x 45 cm
Range of displacement	Latitudinal: 550 mm / Longitudinal: 450 mm

*The TRA2 cannot be used with the LA3 Illumination Unit.

2101531A0	MS27 Stereoscope Complete with BN3 and PB1
210153100	MS27WO Stereoscope Main Unit in Case
210153700	BN3 3x Binoculars Only
210150087	TRA2 T-27 Track Attachment for MS27



2101531A0 with 210150087



MS16

This small mirror stereoscope is compact yet practical with a 16 cm optical path which provides a wide field of view.

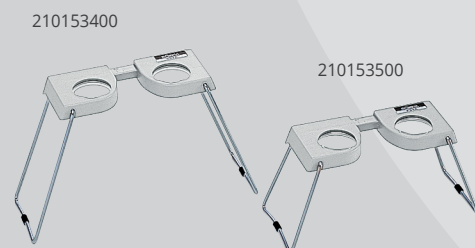
MS16 Specifications

Distance of optical path	16 cm
Field of view	10 x 10 cm
Weight	4.0 kg (8.8 lbs.)
210153200	MS16 Small Mirror Stereoscope

PS4A and PS2A

Handy lens-type stereoscopes. Distance between lenses is adjustable from 56 mm to 75 mm. Two magnifications available, 4x (PS4A) and 2x (PS2A).

210153400	PS2A Pocket Stereoscope (2x with Soft Case)
210153500	PS4A Pocket Stereoscope (4x with Soft Case)



Carrying Cases

Data Collector Cases

Sokkia Data Collector Carrying Cases

804903	Universal Data Collector Case
1026489-01-SURSK	Hard Carrying Case For FC-5000/6000
1026490-01-SURSK	Soft Carrying Case For FC-5000/6000

Instrument Hardcases

1026194-01	CASE, HARD iX W/FUSION
1026192-01-SURSK	SURSK CASE, HARD GT W/FC-5000 AND RC-5 H/P



1026489-01-SURSK

Plumb Bobs



812214



812413



812365

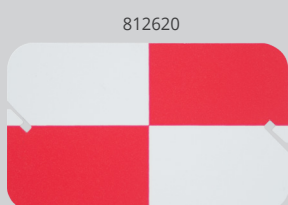
812325



812450



812448



812620

Plumb Bobs

Screw caps and hardened steel points with standard threads.
Storage space for an extra point inside the cap.

812212	12 oz. Plumb Bob
812214	14 oz. Plumb Bob
812216	16 oz. Plumb Bob
812218	18 oz. Plumb Bob
812224	24 oz. Plumb Bob
812290	Extra Point (fits all listed plumb bobs)
812293	Extra Cap (fits all listed plumb bobs)

Plumb Bob Cords

Made with the finest quality braided cord.

812413	White Poly; 50 yd. Spool
812423	Orange Poly; 50 yd. Spool
812439	Fluorescent Yellow Poly; 50 yd. Spool

Leather Scabbards

Rugged leather with stitched and riveted pockets that hold tape or Gammon Reel and a 16 or 18 oz. plumb bob.

812365	Leather Scabbard for Gammon Reel and Plumb Bob
<i>Extra-heavy stitched and riveted pocket.</i>	
812350	Belt for Plumb Bob Scabbard
812315	Scabbard for 10-14 oz. Plumb Bobs
812325	Scabbard for 16-18 oz. Plumb Bobs
812335	Scabbard for 24-32 oz. Plumb Bobs

Tally Register

Four-digit capacity with quick return to zero.

879200	Tally Register
--------	----------------

Gammon Reels

Handy, retracting plumb bob cord reel means no more winding and no more broken or muddy string. Includes 72 lb. test nylon string that weighs 1½ oz.

812448	12 ft. Gammon Reel, Black/Orange
812449	12 ft. Gammon Reel, White/Orange
812450	6½ ft. Gammon Reel, White/Orange
812451	24 yd. Nylon Refill, Red/Orange
812452	24 yd. Nylon Refill, Fluorescent Yellow
812454	24 yd. Nylon Refill, Fluorescent Red

Targets

Available in "Quik-Stik," plastic and translucent plastic variations.

812620	Plastic target notched for attaching to line 2½ x 4 in., red/white
812625	Translucent Plastic target laminated for brilliant illumination and notched for attaching to line 2¼ x 4 in., black/orange
812640	Quik-Stik target with paper back that peels off instantly and sticks to any surface 2 x 3½ in. (package of 25)



16900 W. 118th Terrace • Olathe, KS 66061

800.4.SOKKIA • www.sokkia.com

SOK-1017 Rev I 4/25

Due to the printing process, the colors of the products printed in this catalog may vary slightly from those of actual products. Products displayed within are not to scale. Designs and specifications are subject to change without notice. All weights are approximate. Certain products in this catalog may not be available in specific market areas. Please consult with your nearest Sokkia representative for details. © 2022 Topcon Corporation. All rights reserved. Sokkia is a trademark of Sokkia Topcon Co. Ltd. Other trademarks and trade names are those of their respective owners.