



SOKKIA

Sokkia GRX5 Accessories

Accessories and part numbers

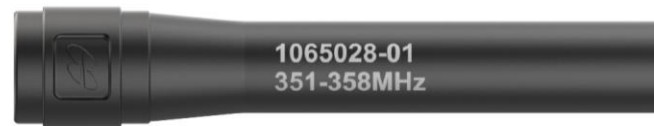
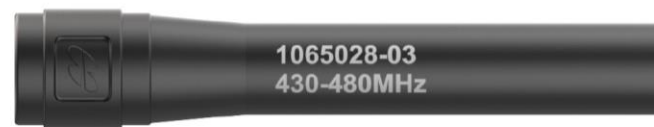
Sokkia GRX5 GNSS Receiver

- An overview of all the Sokkia GRX5 hardware and accessories.



Sokkia GRX5 Radio Antennas

- **UHF TR4+ Sokkia GRX5**
- PN 1065028-03 Whip antenna, 430 to 480 MHz
- PN 1065028-02 Whip antenna, 400 to 450 MHz
- **Alinco Sokkia GRX5 (Japan)**
- PN 1065028-01 Whip antenna, 351 to 358 MHz





Usb-C AC charger:
Used to charge the internal batteries of the Sokkia GRX5 receiver.
Use with the power cable for the correct region.
PN: 1068616-01



Power cable
North America
PN: 1005793-01



Power cable
Europe
PN: 1005794-01



Power cable
Australia
PN: 1021180-01



Usb-C to USB-A adapter:
Use for controllers or computers that do not have a USB-C port.
PN: 1068617-01



Usb-C cable:
Serial connection to the Sokkia GRX5 to a Field controller to install firmware or download raw data.
This cable can also be used to charge the Sokkia GRX5 receiver.
PN: 1068615-01

Powering your GXR5 with a power bank

- The USB port needs to be moisture-free before charging the Sokkia GRX5.
- Requirements:
 - USB Power delivery 3.0 or better (USB 3.1 is better).
 - How do I tell if my USB cable is a USB3.0? Look at the USB connector. Blue means USB 3.0, black means USB 2.0.
 - 60-65W is ideal for charging the Sokkia GRX5. With a lower wattage, it may not charge the internal battery.
 - A current of 3.0 Amps is the minimum current to charge the Sokkia GRX5.



Sokkia GRX5 connectors

- Serial cable to USB-C with seal. Used to communicate with an external radio.
- **PN: 1062146-01**
- Y split cable with a serial connector for an external radio and a SAE connector for external power.
- **PN: 1065934-01**
CABLE,USB-C
POWER/DATA
SPLITTER(0.25m)



Sokkia GRX5 connectors



USB-C SAE power cable with seal. Use to connect the Sokkia GRX5 to a DC power source such as an external battery.

PN: 1062146-01

SAE to SAE 2-meter cable extension. Used to connect the Sokkia GRX5 to a DC power supply.

PN: 14-008022-01



Alligator clips used to connect the Sokkia GRX5 to external power (such as a 12V battery) via SAE cable.

PN: 14-008025-01



SOKKIA